

# MASTICATOR & MAXICATOR

## Paddle Blender

Pharmaceutical | Food & Beverage | Environment | Cosmetics

### Main benefits

#### No Sample Cross Contamination

Samples are protected from any contamination during homogenization thanks to the use of sterile disposable bags.

#### Robust

Second to none in endurance, the Masticator's high quality spring system has proven to withstand the most challenging blending procedures.

#### Easy of use

The Masticators are easily cleaned when fully removing their front door.

#### Wide application scope

Choose the model that fits your needs. Compatible with 80, 400, or 3500 ml bags.



### Product Overview

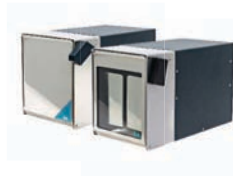
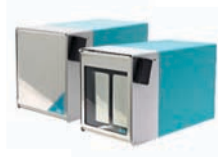
The Masticator is a laboratory paddle blender that carries out a profound homogenization in order to obtain a representative sample for food, cosmetics, pharmaceutical, and clinical quality control, while isolating them from any possible contamination.

The Masticator's high-quality and durable motor ensure safe and efficient homogenization. The Masticator homogenizes samples inside sterile bags thanks to its paddles that drive a masticating action while moving the sample from side to side. This key step in sample preparation ensures an homogenous distribution of microorganisms throughout the diluent. Several models encompass a wide array of possibilities.

## ▶ Paddle blender bags: strenght, endurance, sterilized

The bags are sterilized with gamma-irradiation ensuring no risk of cross-contamination. They hold three features that represent IUL's product quality: strenght, endurance, and sterilization.

The side of the bags are perfectly sealed, without soiling or contaminating any part of the sample. These bags are manufactured from extruded polymer tubes using high-grade, food quality polythene. This brings unrivaled strenght and endurance. IUL is ISO 9001 certified to quality management system standards, guaranteeing IUL quality performance.



Compact	Basic/Panoramic	Classic/Panoramic	Silver/Panoramic	MAXICATOR
80 ml bags*	400 ml bags*	400 ml bags with filter*	400 ml bags with filter*	3500 ml bags*
WxHxD	WxHxD	WxHxD	WxHxD	WxHxD
100 mm x 150 mm x 56 mμ	100 mm x 150 mm x 56 mμ	165 x 260 mm x 60 mμ	165 x 260 mm x 60 mμ	380 mm x 500 mm x 70 mμ
*from 20 to 80 ml samples	*from 80 to 400 ml samples	*from 80 to 400 ml samples	*from 80 to 400 ml samples	*from 400 to 3500 ml samples

## ▶ Accessories & consumables



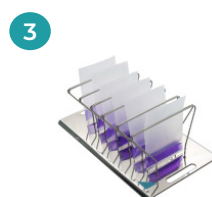
80 ml bags	400 ml bags	400 ml bags with filter	3500 ml bags
<b>1.</b> 2000 units (50 by 50) <b>Cat. 90002456</b>  <b>2.</b> 6000 units (50 by 50) <b>Cat. 90002457</b>	<b>1.</b> 500 units (50 by 50) <b>Cat. 900014050</b>  <b>2.</b> 5000 units (50 by 50) <b>Cat. 90005421</b>	<b>1.</b> 500 units (25 by 25) <b>Cat. 900014501</b> <b>2.</b> 2000 units (25 by 25) <b>Cat. 90002451</b> <b>3.</b> 5000 units (25 by 25) <b>Cat. 90002452</b>	<b>1.</b> 250 units (50 by 50) <b>Cat. 900014035</b>



**1.** Stand and tray for any 400 ml Masticator  
**Cat. 9000742**



**2.** Stainless steel holder for six 400 ml bags  
**Cat. 90002300**



**3.** Stainless steel holder for six 80 ml bags  
**Cat. 90002380**



**4.** Plastic tray  
**Cat. 9000743** (Masticator)  
**Cat. 900011524** (Maxicator)

## Wide range for different uses

### TIMER

Configure the sampling to be timed.



### PANORAMIC

Choose the panoramic version of Masticators to see the sampling process.



### STROKES

Set the number of strokes for second.

\*Available in: Masticator Silver, Silver Panoramic & Maxicator.



### VOLUME

Select your model according to the volumes (80 ml, 400 ml & 3500 ml bags).



## Workflow



1 Introduce the sample into the sterile bag.



2 Close the door leaving the top of the bag visible.



3 Set the parameters (timer, and strokes/second), and start the process closing the door.



4 Pick up the bag with the homogenized sample ready to be analyzed.

## How to automate the whole process



### Smart Dilutor W - Gravimetric Dilutor

Get a full processing capacity and traceability in gravimetric dilutions or liquid dispensing.



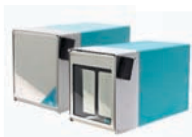
### Eddy Jet 2W – Spiral plater

Eddy Jet 2W spiral plater is used to reduce the number of plates processed, offering a threefold decimal dilution counting range in a single plate.

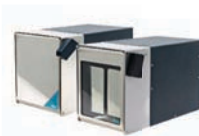
## Technical specifications



80 ml bags



400 ml bags



400 ml bags



400 ml bags



3500 ml bags

Model	Compact	Basic/Panoramic	Classic/Panoramic	Silver/Panoramic	MAXICATOR
Strokes/sec	10	8.5 (50Hz) 10 (60Hz)	8.5 (50Hz) 10 (60Hz)	5-6-7-8	3-4-5-6
Setting	Digital Timer	Digital Timer	Digital Timer	Keyboard/Display	Keyboard/Display
Timer	15/30/60/90s	15/30/60/90s	15/30/60/90s	15/30/60/90/120/ 150/180/210/240s	15/30/60/90/120/ 150/180/210/240s
Paddles & door	Stainless steel	Stainless steel	Stainless steel	Stainless steel	Stainless steel
Inner part	Stainless steel	Steel	Stainless steel	Stainless steel	Stainless steel
Dimensions (WxHxD)	15x15x30 cm 5.9x5x11.8 in	24x26x40 cm 9.4x10.2x15.7 in	24x26x40 cm 9.4x10.2x15.7 in	24x26x40 cm 9.4x10.2x15.7 in	44x50x57 cm 17.3x19.7x22.4 in
Weight	7 kg / 15.4 lb	17 kg / 37.5 lb	17 kg / 37.5 lb	20 kg / 44 lb	52.5 kg / 116 lb
No. of Paddles	2	2	2	2	4

Specifications subject to change without notice

## Order information

- Masticator Basic 400 ml.
  - Cat. 9000470 (220/240 V)
  - Cat. 9000471 (100/127 V)
- Masticator Basic Panoramic 400 ml.
  - Cat. 9000475 (220/240 V)
  - Cat. 9000477 (100/127 V)
- Masticator Classic 400 ml.
  - Cat. 9000400 (220/240 V)
  - Cat. 9000401 (100/127 V)
- Masticator Classic Panoramic 400 ml.
  - Cat. 9000500 (220/240 V)
  - Cat. 9000501 (100/127 V)
- Masticator Silver 400 ml.
  - Cat. 9000420 (220/230 V)
  - Cat. 9000421 (100 V)
  - Cat. 9000461 (100/120 V)
- Masticator Silver Panoramic 400 ml.
  - Cat. 9000520 (220/230 V)
  - Cat. 9000521 (100 V)
  - Cat. 9000522 (100/120 V)
- Masticator Compact 80 ml.
  - Cat. 900085 (220/230 V)
  - Cat. 900086 (100 V)
  - Cat. 900087 (100/120 V)
- MAXICATOR 3500 ml.
  - Cat. 90002400 (220/230 V)
  - Cat. 90002401 (100 V)



**AENOR**

GESTIÓN  
DE LA CALIDAD

ISO 9001